

LAMINA PROOF

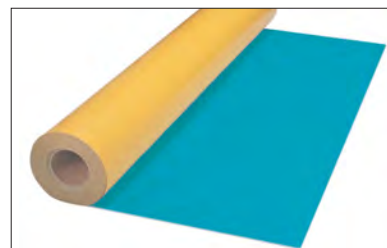
FLEXIBLE and WATERPROOF liners for terraces, in changing rooms, bathrooms...and concrete pools. Glass mosaic tiles can be laid directly over the liners.



WARNING

LAMINA PROOF must not be used:

- ◆ For other applications without consulting our Engineering Department previously.
- ◆ On surfaces that are dirty, broken, with traces of non-stick materials...
- ◆ Over surfaces unable to withstand a minimum resistance of 0.5 N/mm²



FIELDS OF APPLICATION

OPTION 1: using only LAMINA PROOF:

- Liner for waterproofing mortar or concrete surfaces using an adhesive cement such as C2S1.
- Can be used on balconies, terraces, in changing rooms, bathrooms, on flat roofs, in public spaces, etc. for waterproofing and subsequent tiling.
- The great flexibility of this product and its resistance to traction makes it ideal for waterproofing cement surfaces with cracks and fissures.

OPTION 2: combined with LAMINA STEEL:

- The ideal and very affordable solution for tiling galvanized steel and stainless steel pools in ceramic or glass mosaic.
- This is the best aesthetic solution for galvanized steel pools, replacing the traditional PVC liner.

TECHNICAL SPECIFICATIONS

LAMINA PROOF: three-layer lining comprising:

- two polypropylene layers +
- one polyethylene layer with a special textile that allows tiles to be applied with adhesive cement without the need for an intermediate layer.

Liner certified and approved for category A1, A2 and C loads and for the load categories given in the ZDB specifications.

Liner resistant to bases, salt water, acids and micro-organisms.

DIRECTIONS FOR USE

◆ Substrate preparation:

Proper, thorough, and meticulous cleaning of the substrate is the best guarantee for a lasting hold.

For cement surfaces: remove any traces of damaged, loose, crumbly or flaky concrete, dust, paint, wax, release agents, etc.

◆ Applying LAMINA PROOF:

Apply adhesive cement, such as C2S1, over the mortar or concrete substrate using a square-notched trowel with the largest notch width 4x4-mm notch; immediately position the first sheet of **LAMINA PROOF** liner and press down with the smooth trowel edge to remove any bubbles of trapped air and producing perfect adhesion of the adhesive to the geotextile side.

Apply the next sheet of **LAMINA PROOF** liner:

- on terraces: overlapping the previous sheet by 5 cm., or
- in swimming pools without overlapping, ie laying one sheet next to the other.



◆ Applying BANDA-SOLAPES sealing tape:

- on terraces: there is no need to apply the **BANDA-SOLAPES** strips to the joints between **LAMINA PROOF** sheets because they are overlapped to provide a good seal.
- for concrete pools: apply **BANDA-SOLAPES** strips to **all** the joints between **LAMINA PROOF** sheets.
- for galvanized steel and stainless steel pools: consult the Technical Department.

◆ Attaching ceramic or glass mosaic tiles:

Tile directly over the different **LINERS** on walls and floor using an adhesive cement such as **TECNOCOL FLEX**.

◆ Grouting:

- on terraces: we recommend using **EURO-COLOR FLEX**. Available pre-dosed in 24 different colours.
- for concrete pools: the appropriate grout for use in **ALL** cases is **CERPOXI** or **PROFESSIONAL PX**, available pre-dosed in 26 different colours.
- for galvanized steel and stainless steel pools: consult the Technical Department.

APPLICATION DOSAGE:

LAMINA PROOF	proportional to the m ² to seal plus joint waterproofing
EPOXICOL	approx. 0.3-0.5 kg/lm of sealing tape BANDA SOLAPES

TECHNICAL INFORMATION

LAMINA PROOF: Standards:	UNE-EN 13.956:2013
• Waterproofing :	1.5 bar (version B)
• Burst pressure:	3.0 bar
• Resistance to traction L/T :	L=370 N/50mm and T=250 N/50mm
• Elongation at break L/T :	L=90% and T= 120%
• Resistance to tearing :	L=100 and T=140N
• Temperature resistance:	-30°C / +90°C
• Reaction to fire:	Class B2
• Format:	1 x 30lm and 0.62mm thick
(L=longitudinal; T=transversal)	

Sealing Tape (BANDA-SOLAPES): Format: 14cm x 50ml.

Preformed Sealing Corner (BANDA-ESQUINAS): Format: 12cm x 12cm x 12cm



COLLAR-FOR-TUBES from 12 to 22 mm diameter



Apply the **BANDA-SOLAPES** strips to the joints between **LAMINA PROOF** sheets.



Apply the **BANDA-ESQUINAS** at all 90° angles in the pool.



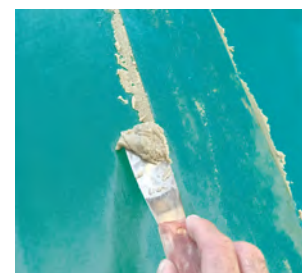
LAMINA PROOF are guaranteed waterproof and achieve an unbeatable aesthetic finish.



Apply **EPOXICOL** between the sheets of **LAMINAS** to attach the **BANDA-SOLAPES** waterproofing strips.



Press firmly on the **BANDA-SOLAPES** with a smooth-edged trowel.



Remove the excess **EPOXICOL** from both sides of the **BANDA-SOLAPES** strips.