

FIXAFLEX GEL

HIGHLY ADHERENT flexible cement glue.
with GEL texture: very fine and anti-sagging.
Outdoors: ideal for pavements and façades.
Indoors: ideal for laying porcelain stoneware on old tiles.



WARNING

FIXAFLEX GEL should not be used:

- ◆ Without abiding by all technical application instructions.
- ◆ For surfaces subject to extreme variations (use **ELASTICER**).
- ◆ For very THICK pieces applied to façades without anchorages. Consult the current norms regarding that matter.
- ◆ On wet surfaces.
- ◆ Beyond the allowed temperature range.

FIELDS OF APPLICATION:

- ◆ Due to its high degree of **flexibility**, it is the ideal product to place ceramic tiles on:

façades, balconies, terraces, heavily transited areas, airports, supermarkets, hospitals, radiant floor systems, old ceramic tiles,...
- ◆ Delicate placing of ceramic tiles that are **NOT AT ALL ABSORBENT** on **NON-ABSORBENT** ceramic.
- ◆ Placing of stoneware or porcelain stoneware directly on gypsum wallboard plaster-board such as damp-proof Pladur, or placing of stoneware or porcelain stoneware on plaster or NORMAL gypsum wallboard plaster-board following priming with **HIDRO-PRIMER**.
- ◆ Placement of polystyrene isolation panels, mineral wool, soundproofing panels...
- ◆ **FIXAFLEX GEL** is a thin layered cement applicable in layers measuring from 3 to 10 mm

TECHNICAL FEATURES:

FIXAFLEX GEL is a careful mixture of cements, selected arids, specific additives and resins.

FIXAFLEX GEL is very easy and enjoyable to use thanks to its special viscosity and tixotrophy.

FIXAFLEX GEL does not droop, it is flexible and develops extraordinary adherence.

APPLICATION:

◆ Surface:

All surfaces must be resistant, solid, free of dust, paint, wax, oils and grease. They will also be thoroughly hardened.

Very absorbent surfaces or those that are exposed to the sun during the summer must be previously dampened to avoid the rapid loss of water contained in the mixture.

◆ Preparation of the mixture:

Mix approximately with 30% of clean water until it is thoroughly mixed (maximum 7.5 litres of water for each 25 Kg sack of cement); use the electric mixer at low speed to prevent lumps.

◆ Application of the mixture:

- Preferably use a toothed trowel. The tooth size will be in accordance with the size of the tile to be glued.
- It is not necessary to dampen the tiles before placement.



- In difficult or outdoor applications, use the double-pasting technique. Façades: to adhere pieces larger than 30x30cm or weighing more than 40 kg/m², use an appropriate metal anchor as well.
- Use your fingertips at all times to ensure that a superficial coat does not appear. If such coat does develop, the cement must be combed anew with the toothed trowel (never dampen with water).
- Always apply pressure to the tile to ensure that the cement "wets" minimum 80% of the reverse of the ceramic tiles. Tap on the pieces with a rubber mallet.
- Protect the recently laid pavement from excessive heat, freezing temperatures, rain... during at least 24 hours after it has been laid.
- The application of expanded polystyrene isolation panels is carried out by applying dollops of cement to the reverse side of the sheet. The panel must be evenly applied.

◆ **Sealing of the joints:**

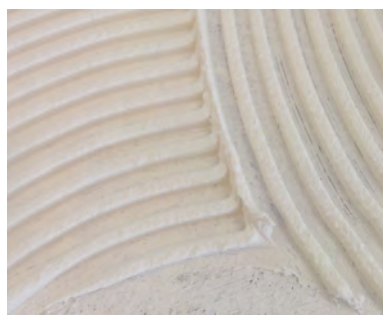
We recommend the use of a specific material such as **FIXCOLOR** (fine or thick grains) or **EUROCOLOR FLEX** or **IDEAL COLOR** or **CERPOXI** or **PROFESSIONAL PX**.

In the expansion joints, apply a specific, elastic material, such as **SELLALASTIC** or **SILICONA NEUTRA**.

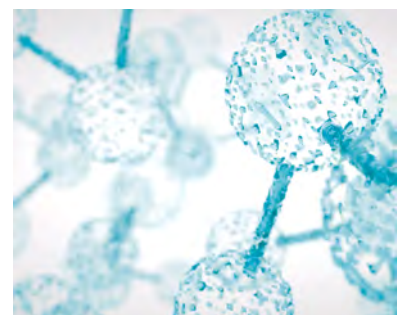


CONSUMPTION:	
As binding cement: depending on the size of the piece:	from 2 to 5.5 Kg/m ²
Adhesion by points of insulation boards:	from 0.5 to 0.8 Kg/m ²

TECHNICAL DATA	
DIRECTIVES	EN 12.004
PRODUCT	
• Type:	C2 TE S1 Normal setting, reduced slip, cementitious adhesive.
• Density in powder:	1.5 g/cm ³
• Toxicity:	irritant, avoid contact with skin and eyes
APPLICATION	
• Mixing water:	7.5 litres per 25-kg sack.
• Density of the mixture:	1.7 g/cm ³
• Temperature of application:	+ 5°C to + 35°C
• Open time:	30 min.
• Waiting time:	30 min.
• Useful life:	1 hour
• Slip:	< 0.5 mm.
• Thickness of layer:	< 10 mm.
• Grouting after:	24 hours
• Can be walked on after:	48 hours
PERFORMANCE PROPERTIES	
• Resistance to damp:	excellent
• Resistance to ageing:	excellent
• Resistance to solvents:	excellent
• Flexibility:	very good
• Initial adhesion:	≥ 1.0 N/mm ²
• Adhesion after immersion in water:	≥ 1.0 N/mm ²
• Adhesion after ageing through heat:	≥ 1.0 N/mm ²
• Adhesion after freezing-thawing cycles:	≥ 1.0 N/mm ²
• Pot life: adhesion (30 min):	≥ 0.5 N/mm ²
• Transverse deformation EN 12002:	≥ 2.5 mm
STORING	
• In covered, dry, ventilated places:	12 months
PRESENTATION	
• Supplied in:	25-kg sacks in white and grey color.



Fluid, thin, smooth,...the adhesive easier to apply.



GEL texture: fluidicity without slipping.